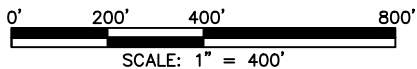
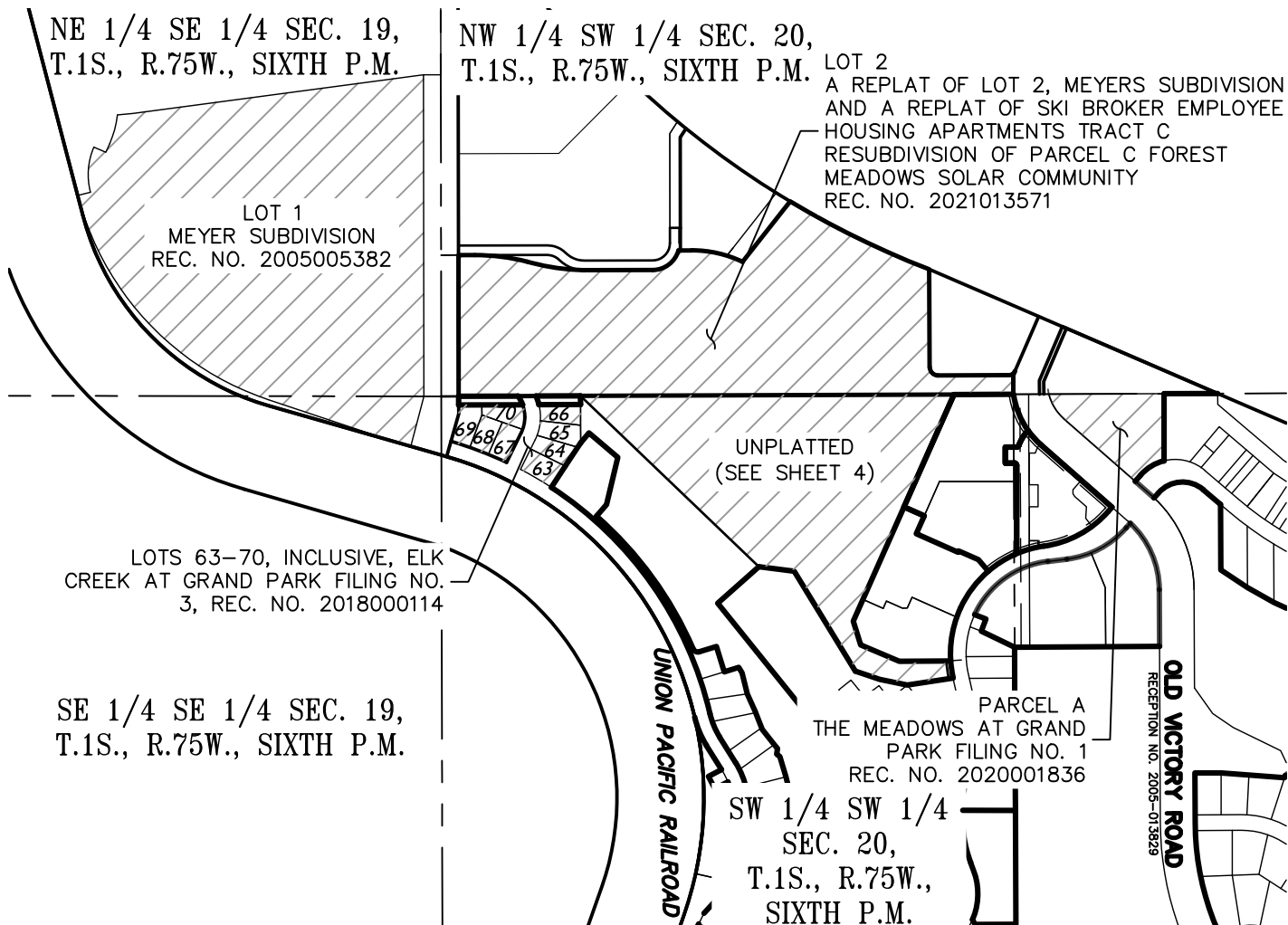
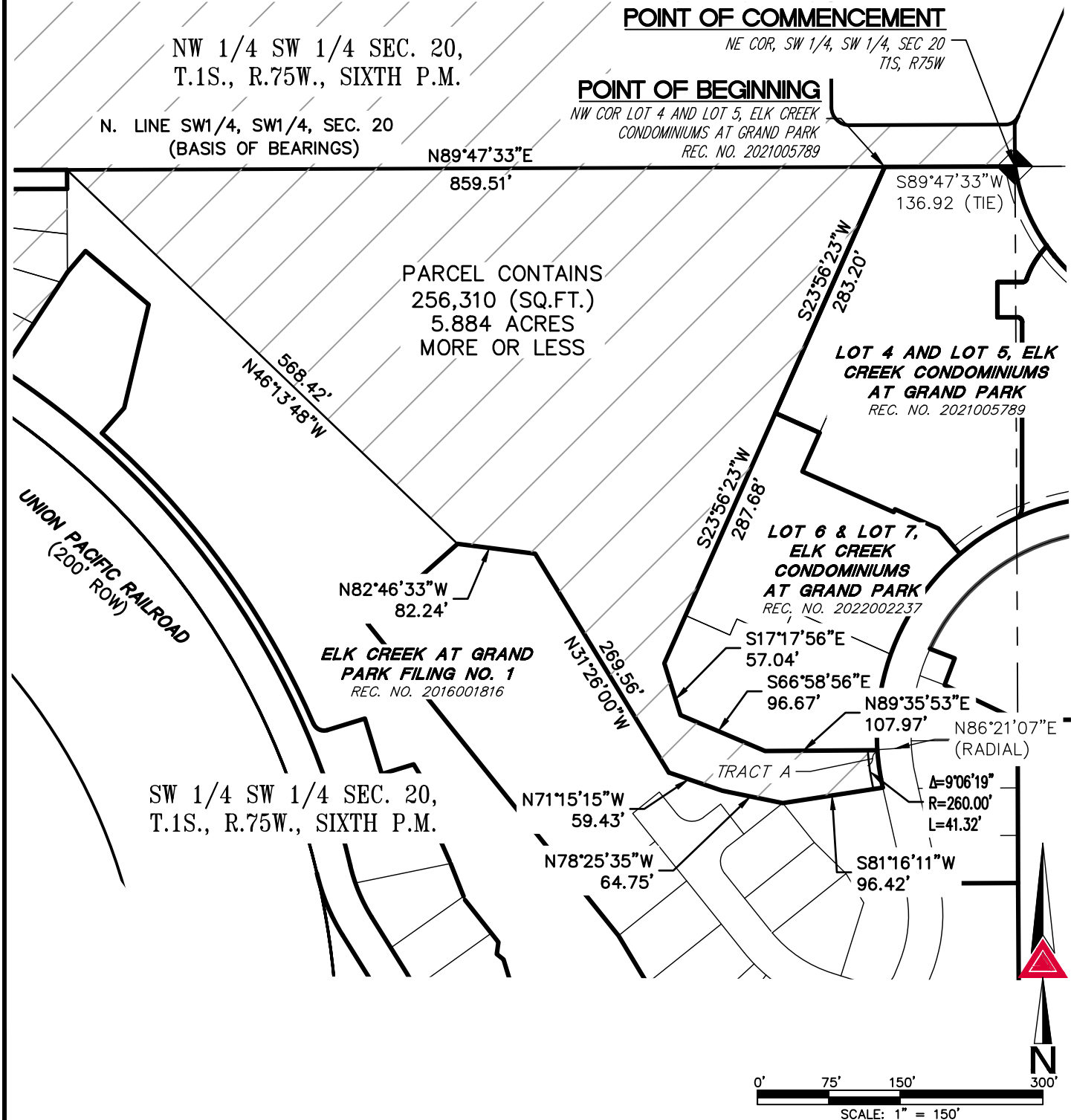


# ILLUSTRATION TO EXHIBIT A



NOTE: THIS ILLUSTRATION DOES NOT REPRESENT A MONUMENTED LAND SURVEY AND IS ONLY INTENDED TO DEPICT THE ATTACHED LEGAL DESCRIPTION.

# ILLUSTRATION TO EXHIBIT A



NOTE: THIS ILLUSTRATION DOES NOT REPRESENT A MONUMENTED LAND SURVEY AND IS ONLY INTENDED TO DEPICT THE ATTACHED LEGAL DESCRIPTION.

**AZTEC**  
CONSULTANTS, INC.

300 East Mineral Ave. Suite 1  
Littleton, Colorado 80122  
Phone: (303)713-1898  
Fax: (303)713-1897  
[www.aztecconsultants.com](http://www.aztecconsultants.com)

**GP NORTH MEADOW METROPOLITAN DISTRICT**  
SW 1/4, SEC 20 & SE 1/4, SEC 19, T1S, R75W, 6TH P.M.  
COUNTY OF GRAND, STATE OF COLORADO

PATH: Q:\181122-01 - GRAND PARK - CONTROL\DWG\EXHIBITS\DISTRICT PARCELS\MEADOW&BYERS METRO DISTRICT.DWG  
JOB NUMBER: 181122-04 DATE: 2/23/2023 DWG: BOL CHK: AKP 4 OF 4 SHEETS